

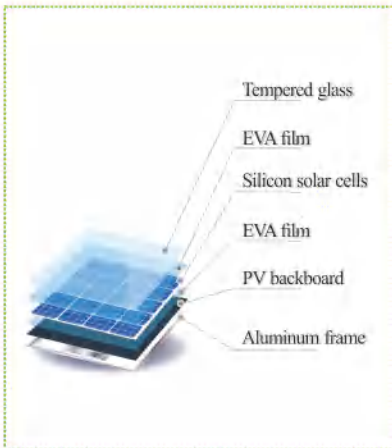


## ELECTRIC CHARACTERISTICS

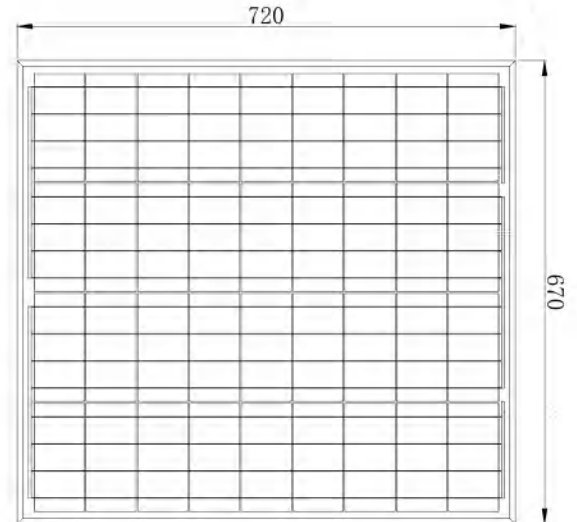
Max. Power ( Pmax )	70
Max. Power Voltage ( Vmp )	18.1
Max. Power Current ( Imp )	3.87
Open Circuit Voltage ( Voc )	22.2
Short Circuit Current ( Isc )	4.13

## SPECIFICATION

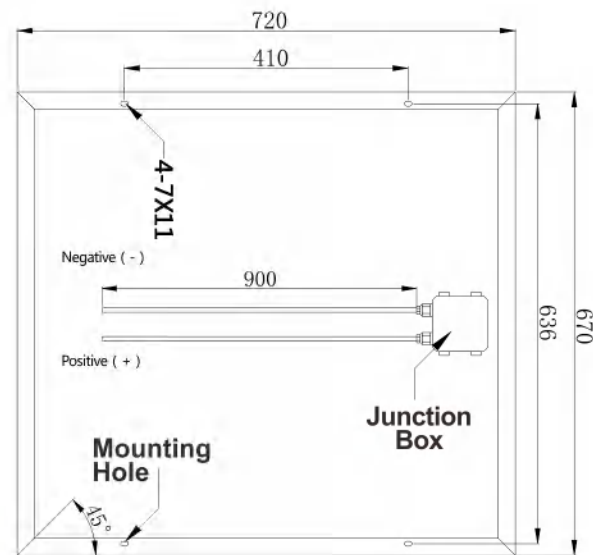
Model No. B6PY07018L001	
Cell Type	POLY
Dimension (mm)	720*670*30
Cable Length (mm)	900
Type of Connector	None/MC4
Weight (kg)	5.26



Front



Back



- High energy conversion rate
- Customized design
- Green energy
- 25 years lifetime

